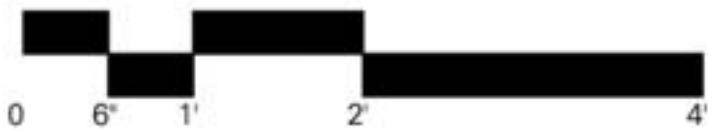


detail A 3.1



STL. ANGLE + RUBBER
FILLER GASKET

CORRUGATED MTL.

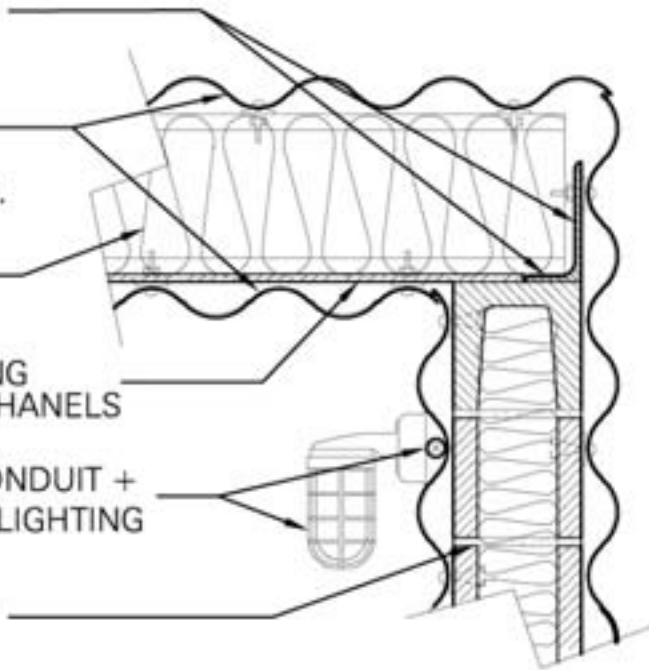
FASTENED TO 9 $\frac{1}{2}$ " STL.
C-CHANNELS @ 24" O.C.

9 $\frac{1}{2}$ " BATT INSULATION

$\frac{1}{2}$ " PLYWOOD SHEATHING
FASTENED TO STL. C-CHANNELS

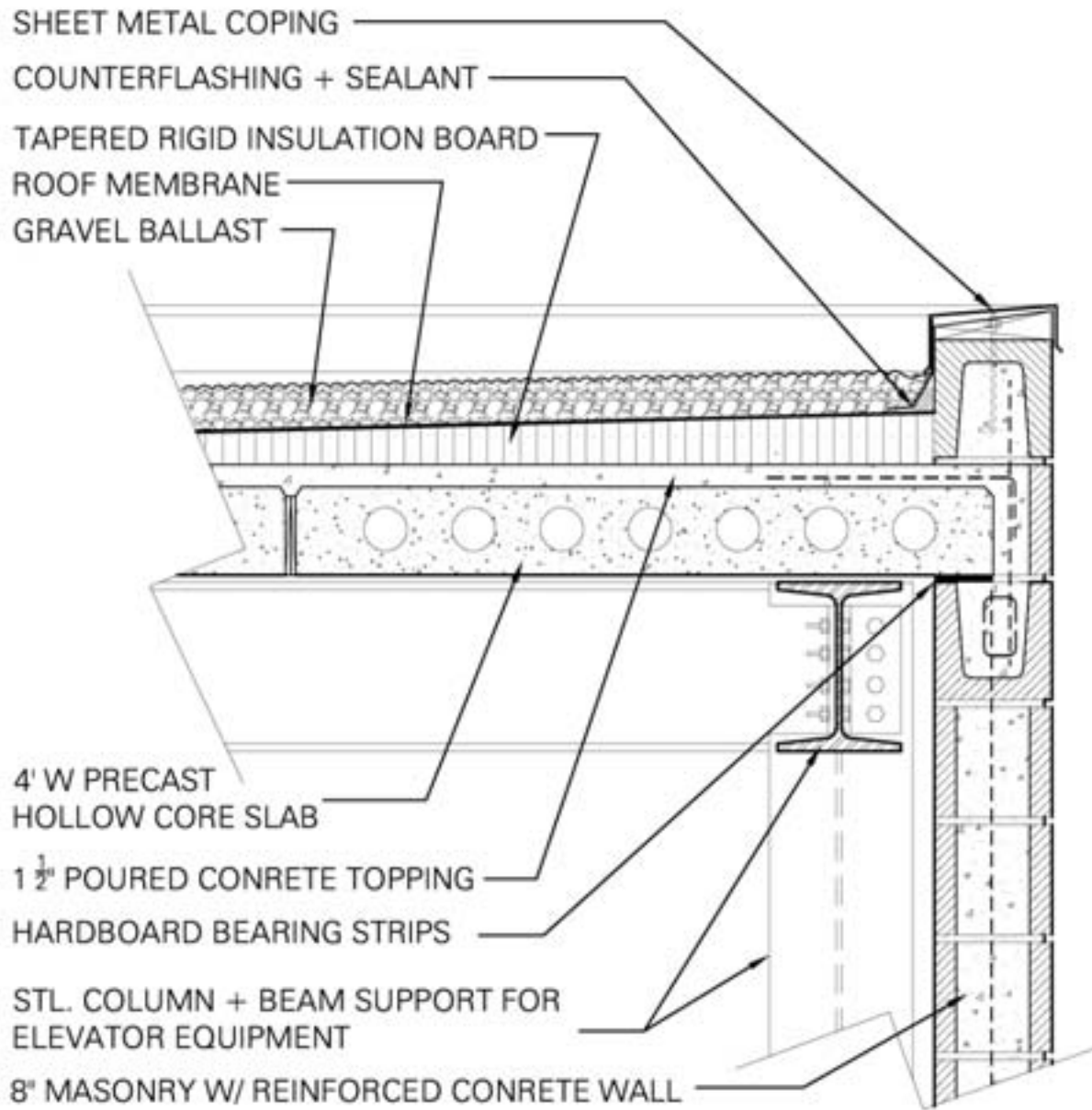
CONTINUOUS ELEC. CONDUIT +
INCANDESCENT DOWNLIGHTING

8" MASONRY WALL W/
INSULATED CORE



detail A 3.2





detail A 3.3

