

**Early American Architecture,
Introduction
Issues and Methods**

American ambivalence about “Progress” and “Nature”



The Lackawanna Valley, 1855, George Inness

American Exceptionalism: Westward Expansion

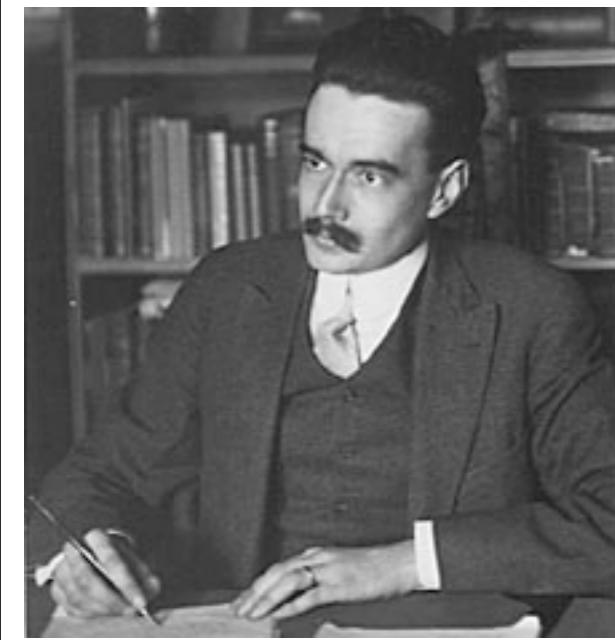


American Progress, c. 1872, John Gast

Fiske Kimball (1888-1952), Architectural Historian

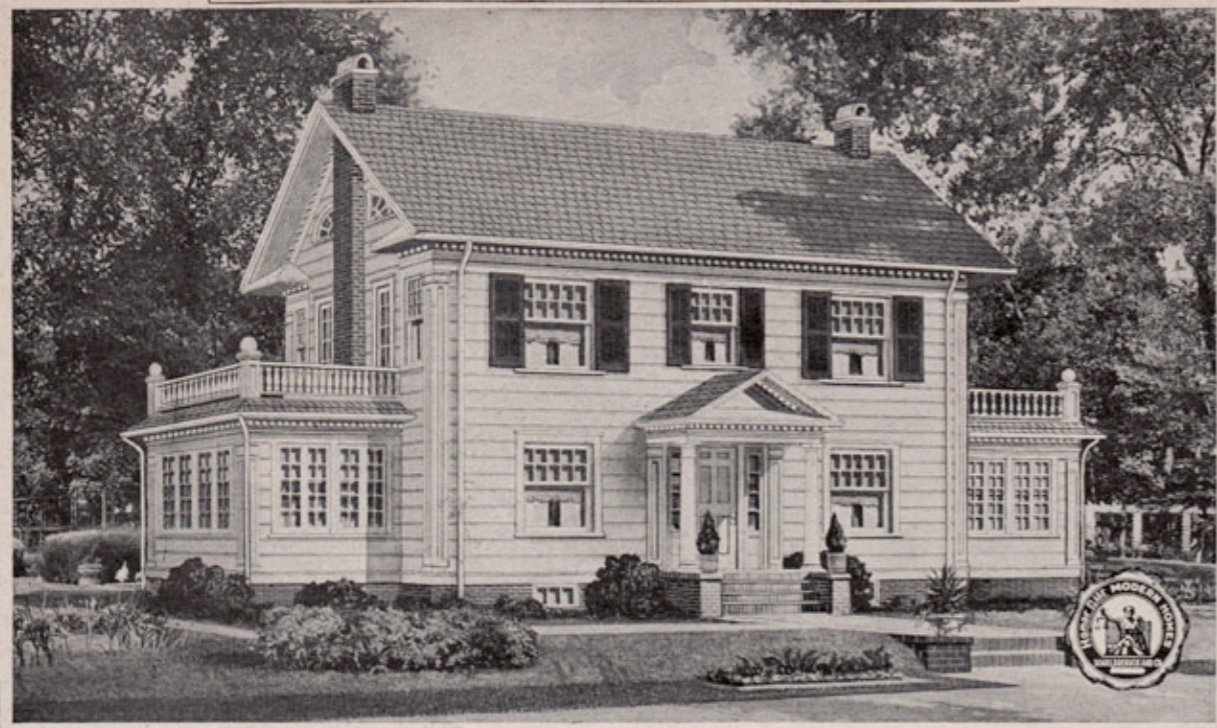
Below Left: Shack Mountain, Charlottesville, Virginia

Below Right: Monticello, Charlottesville, Virginia



Monticello

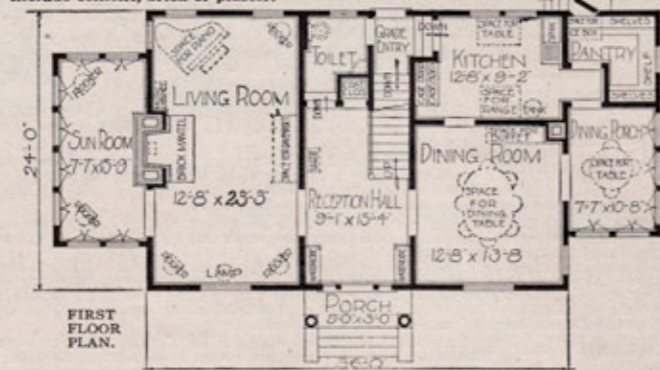
NINE ROOM COLONIAL



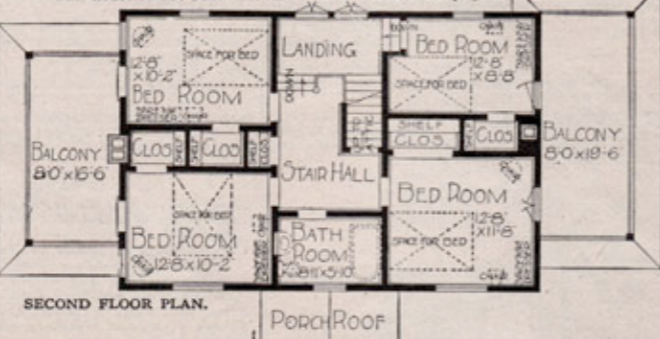
Honor Bill

The Lexington
No. 13045 "Already Cut" and Fitted.
\$4,472⁰⁰

At the price quoted we will furnish all the material to build this nine-room Colonial house, including kitchen cabinet, medicine case and mantel. We guarantee enough material to build this house. Price does not include cement, brick or plaster.



This house can be built with the rooms reversed. See page 3.



OPTIONS
Sheet Plaster and Plaster Finish to take the place of wood lath, \$231.00 extra.
See page 120.
Tile floor in bathroom and toilet, instead of maple, \$52.00 extra
Storm Doors and Windows, \$208.00 extra.
Screen Doors and Windows, galvanized wire, \$132.00 extra.
If Mantel is not wanted, \$58.00 less.
This house can be built on a lot 55 feet wide.
For prices of Plumbing, Heating, Wiring, Electric Fixtures and Shades, see page 121.
Our Guarantee Protects You—Order Your House From This Book.
Price Includes Plans and Specifications.

See Description of "Honor Bill" Houses on Page 7.

THE LEXINGTON was designed by an architect whose specialty is houses of the true Colonial type. This is his masterpiece in a style that will be popular for all time. Here's an exterior that will look well on any lot. With a few green trees in the landscape for a setting, this beautiful white Colonial with its green blinds and cozy sun porches will claim more than a passing glance.

First Floor See the group of casement windows on the stair landing above and the two pairs of French doors. Standing between these you can see across the large living room and sun room on your left and the dining room and glassed-in dining porch on the right. The lavatory and toilet on this floor can be reached from the grade entrance or from the reception hall. At the end of the reception hall are two mirror doors, one leading to the toilet and the other to the coat closet.

The hall, living room and dining room are all finished in beautiful birch. On both sides of the entrance are roomy wardrobes. Beside the graceful open stairway is room for hall furniture and opposite is a place for a grandfather clock. Entire first floor has clear maple floors and two-panel doors.

Kitchen excellence has been obtained by making sure that this room is neither too large nor too small, that the work can be done with few steps and that there be good light. Space for the ice box is just inside the pantry door and may be locked from the outside. The kitchen cabinet is furnished with bread board, dough board, flour bins and work table top.

Rooms are 9 feet from floor to ceiling.

Second Floor The second floor is also very well planned, the hall is light and airy, due to the casement windows on the landing. Four corner bedrooms with light and air from two sides, all of good size and arranged for comfort, each having good closet. Doors lead from bedrooms to balconies over sun room and dining porch. Rooms are 8 feet 2 inches from floor to ceiling.



Basement Excavated basement under the entire house.

Paint for three coats outside, your choice of color. Varnish and wood filler for interior finish. Chicago Design hardware, see page 126. Built on a concrete and brick foundation. No. 1 yellow pine framing lumber. Clear cypress siding. Roofed with Oriental Asphalt Shingles, guaranteed for 17 years.

SEVEN MODERN ROOMS

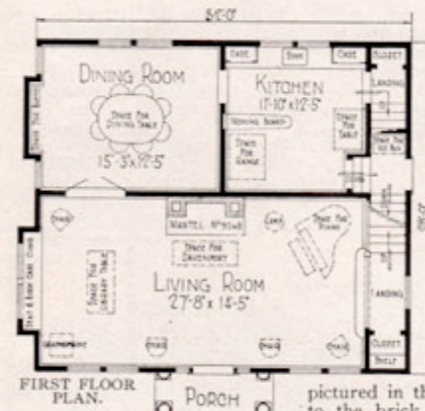


Honor Bill

The Martha Washington
No. 13080 "Already Cut" and Fitted.
\$3,764⁰⁰

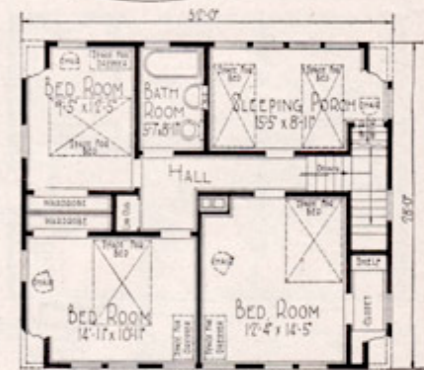
See Description of "Honor Bill" Houses on Page 7.

At the price quoted we will furnish all the material to build this seven-room Colonial house, consisting of mill work, lumber, lath, Oriental shingles, porch ceiling, flooring, siding, finishing lumber, building paper, eaves trough, down spout, sash weights, tile, wardrobes, bookcase, hardware, kitchen cabinet, medicine case, mantel and painting material. We guarantee enough material to build this house. Price does not include cement, brick or plaster.



FIRST FLOOR PLAN.

THE "MARTHA WASHINGTON" is a design that will delight lovers of the real Colonial type of architecture. The entrance with its Colonial columns, Colonial door and side lights is most inviting and attractive, flanked by the double Colonial windows on either side. The view to the visitor or passerby presents a vision of hospitality and brightness that is characteristic of many famous historical homes. The second story front is in keeping with the balance of the exterior. The pure white wide siding is set off to the best possible advantage by the sea green Oriental shingles and Colonial chimney. Fancy this commodious home set in a landscape as pictured in the illustration. The red tile approach to the brick porch ornamented with flowers and shrubbery will often prompt you to stand and admire this beautiful creation of the architect's skill.



SECOND FLOOR PLAN.

Many a time, too, you will be glad to rest on the rustic seat during the cool summer evening hours and congratulate yourself upon the selection of a home that reflects refined taste, solid comfort, real economy and good judgment. Seat furnished for \$6.00 extra.



Side and Front View of the Martha Washington.

First Floor Opening the Colonial door you enter a spacious living room extending the entire width of the house. Directly in front you find a massive brick mantel. To your left is a double bay window with seat and bookcase. To the right an artistic open stairway to the second floor. In this big room you have ample space for a large piano, phonograph, davenport, library table, plenty of chairs, reading lamp and any other articles of furniture you deem necessary for your own comfort and the entertainment of your guests. This room is so well lighted and ventilated that an outside porch is really unnecessary. To the left of the brick mantel is a pair of French doors leading into a fair size dining room lighted by a pair of double windows; also the two windows to the left form a bay in which may be placed a commodious buffet.

(Description continued on the opposite page.)



The AMSTERDAM Honor Bilt. \$4,680⁰⁰
No. 3196 "Already Cut" and Fitted.

See Description of "Honor Bilt" Houses on Page 7.

HERE you see floor plans and many up to date features included in the "Amsterdam" at the price quoted on the opposite page. Study the floor plans at the bottom of this page showing the very attractive and convenient arrangement of rooms illustrated.



\$5,140⁰⁰

For all the material to build this house "Already Cut" and Fitted.



THE MAGNOLIA

"Honor Bilt." No. 2089. "Already Cut" and Fitted.

At the above price we will furnish all the material to build this ten-room house, including mill work, lumber, lath, shingles, porch ceiling, siding, flooring, finishing lumber, building paper, eaves trough, down spout, sash weights, hardware, nails, eaves, cases, colonnade, roofing, painting material, mantel, tile and grate. We guarantee enough of the above material to build this house. Price does not include cement, brick or plaster.



There can be no question of its imposing appearance, graceful lines and other attractive features. This is a house for the discriminating builder who is willing to invest a fair amount for the largest returns in comfort, convenience and extra high quality.

First Floor A Colonial front door opens from the porch into the reception hall, which has French doors leading to the living room and the dining room. French doors also lead from the living room to the solarium or sun parlor. A massive but graceful stairway leads from the hall to the second floor. There is a rear hall back of the stairway, with doors leading to the kitchen, the den and the rear porch. The kitchen has a nicely arranged breakfast alcove lighted by three fancy windows. A china case over each seat in the alcove. See illustrations on the opposite page. Rooms are 9 feet 6 inches from floor to ceiling.

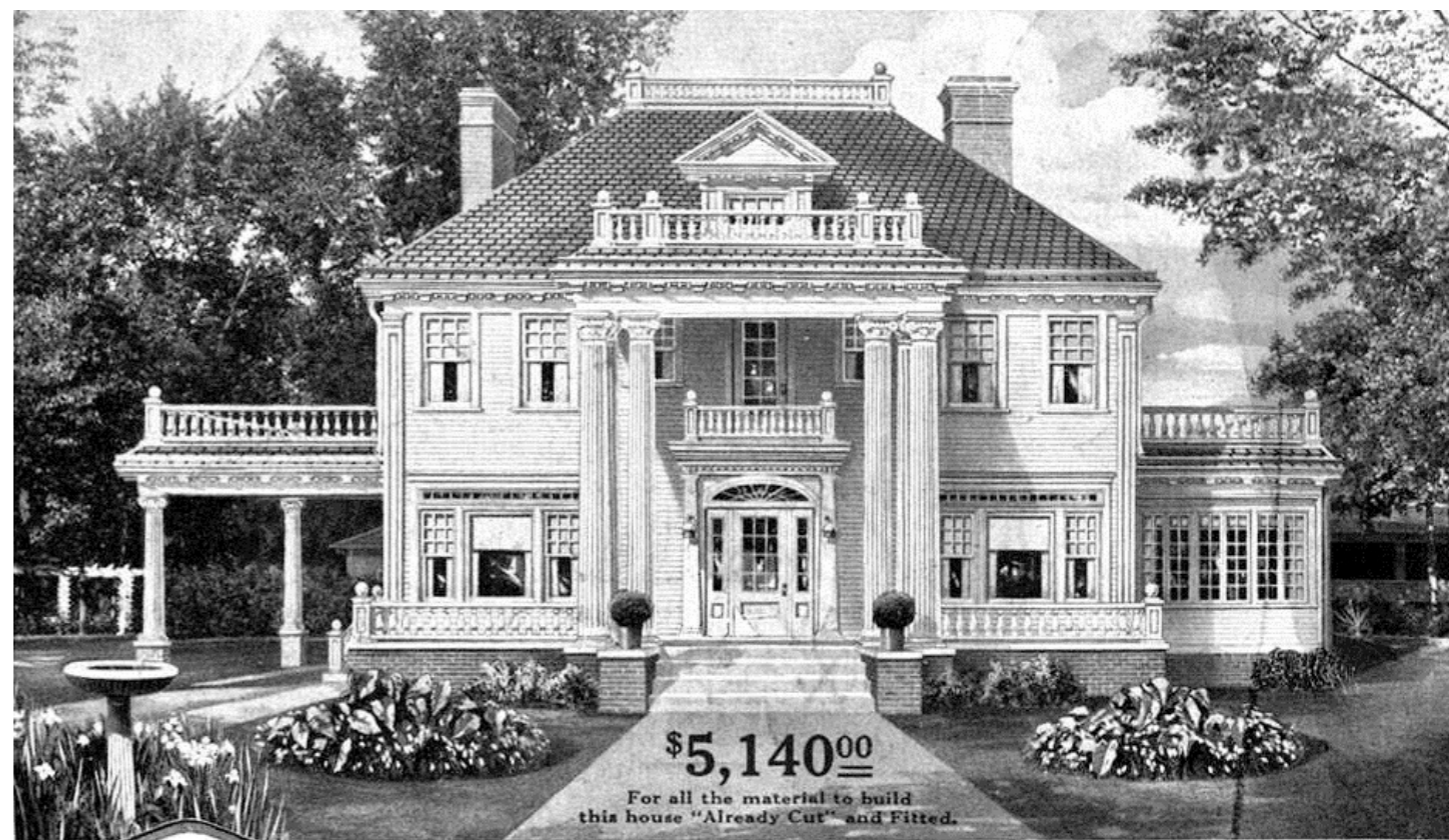
Second Floor There are four bedrooms with closets, two bathrooms and a sleeping porch on this floor. One of the front bedrooms and one of the rear bedrooms have dressing rooms, with extra compartments for dresses and hats. Other conveniences are shelves in the closets, a special broom closet and a stairway to the attic. Note that the servants' quarters are completely separate and have a stairway from the kitchen. Rooms are 9 feet from floor to ceiling.

Basement An excavated basement under the entire house, 7 feet from floor to joists, lighted with basement sash.

We furnish oak flooring, oak doors and birch trim for the reception hall, living room, dining room and sun parlor. Yellow pine flooring, doors and trim for the rest of the first floor. With the exception of the French doors for the living room, dining room and sun parlor, all other inside doors are the latest two-panel design. For the second floor we furnish yellow pine flooring and trim with five-cross panel solid white pine doors.

A pair of French doors lead from the stair landing to the deck and a French door from dressing room to front of balcony. Painted two coats outside, your choice of color. Varnish and wood filler for interior finish. Built on a concrete and brick foundation, frame construction, No. 1 yellow pine framing and dimension lumber.

Our Guarantee Protects You—Order Your House From This Book.
Price Includes Plans and Specifications.



Above: *The Magnolia*, as built in Florence, Alabama, 1918



Right: *The Magnolia*, as built in Benson, North Carolina, 1918

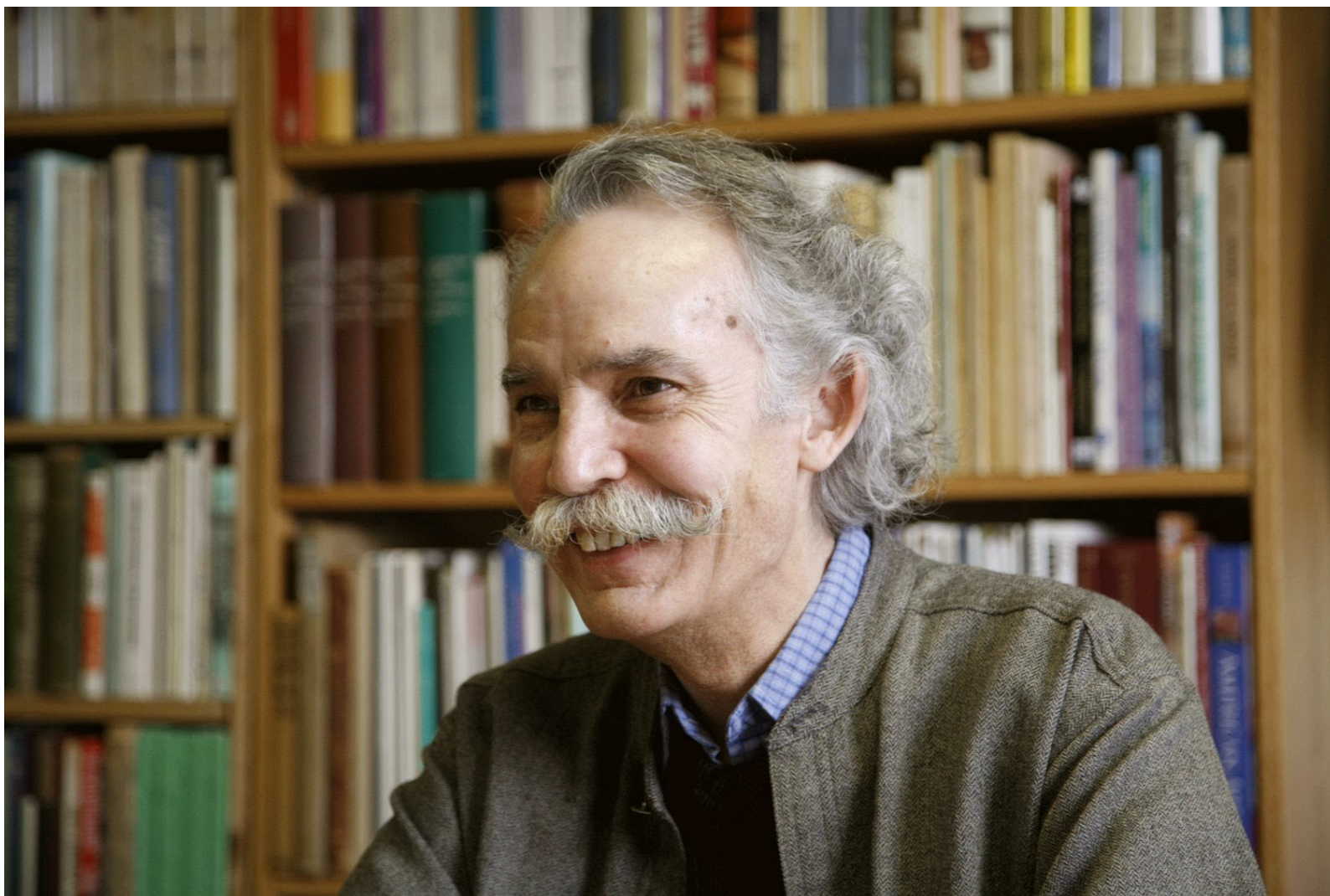
EARLY AMERICAN ARCHITECTURE

**From the First
Colonial Settlements
to the National Period**

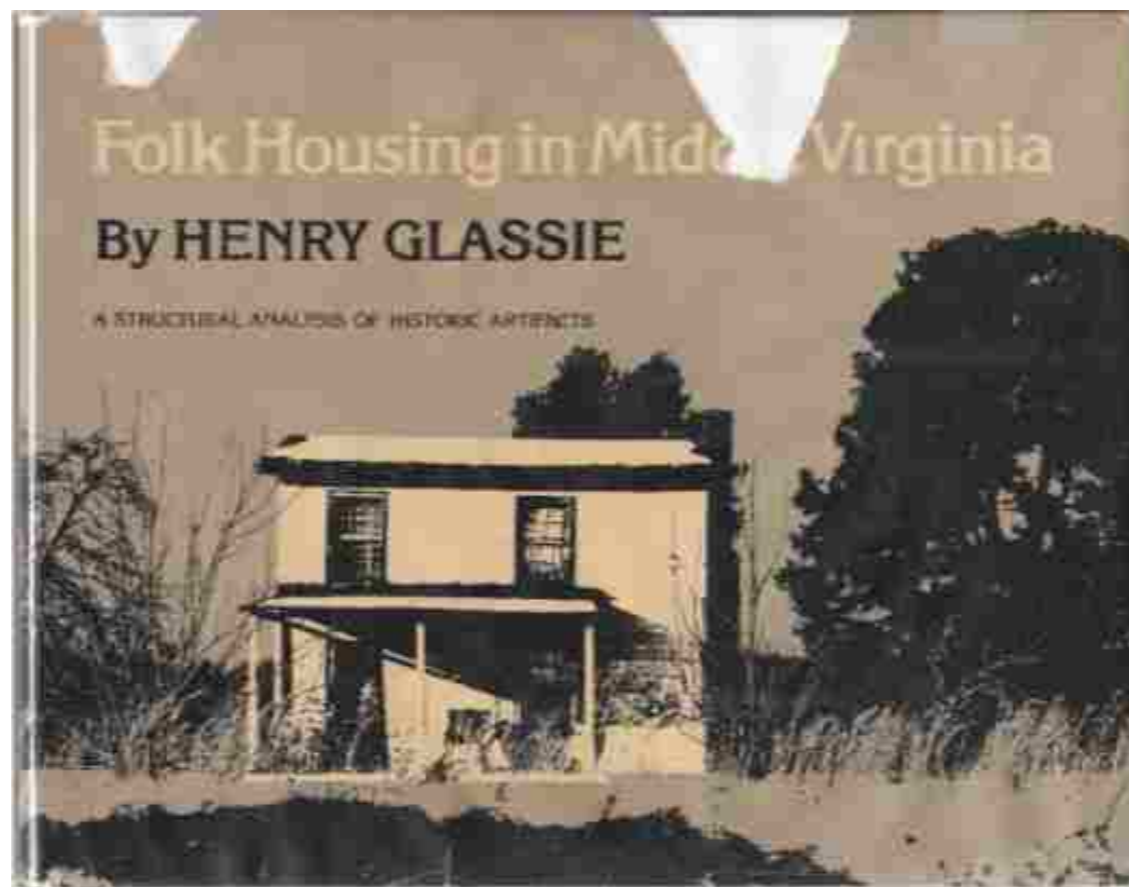
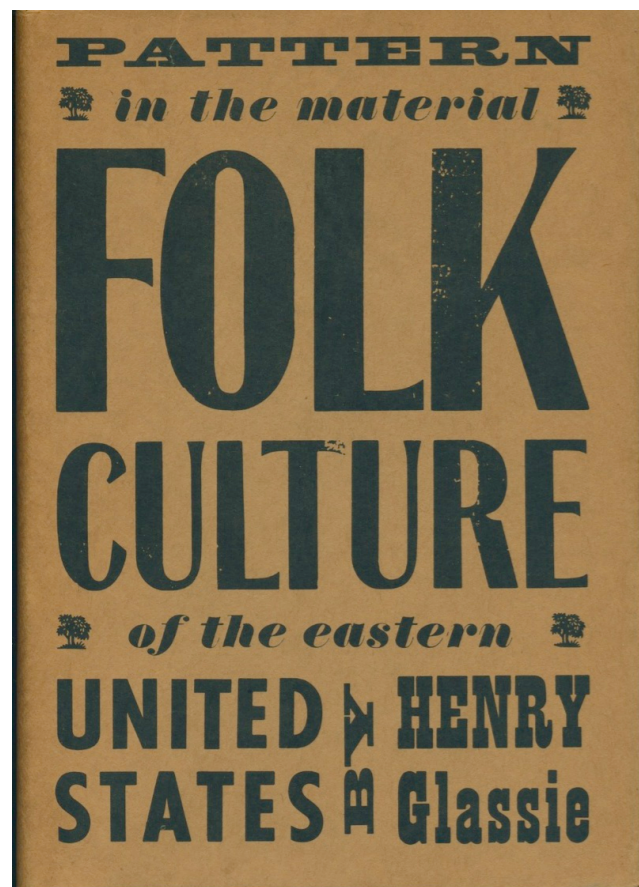


HUGH MORRISON

Hugh Morrison (1893-1970), Architectural Historian.
Early American Architecture first published in 1952,
updated and revised in new editions 8 times.



Henry Glassie (1941 -)
Folklorist at the University of Illinois.
Revolutionized methodology and
scholarship in the discipline of
Architectural History.



Dell Upton (1945 -)

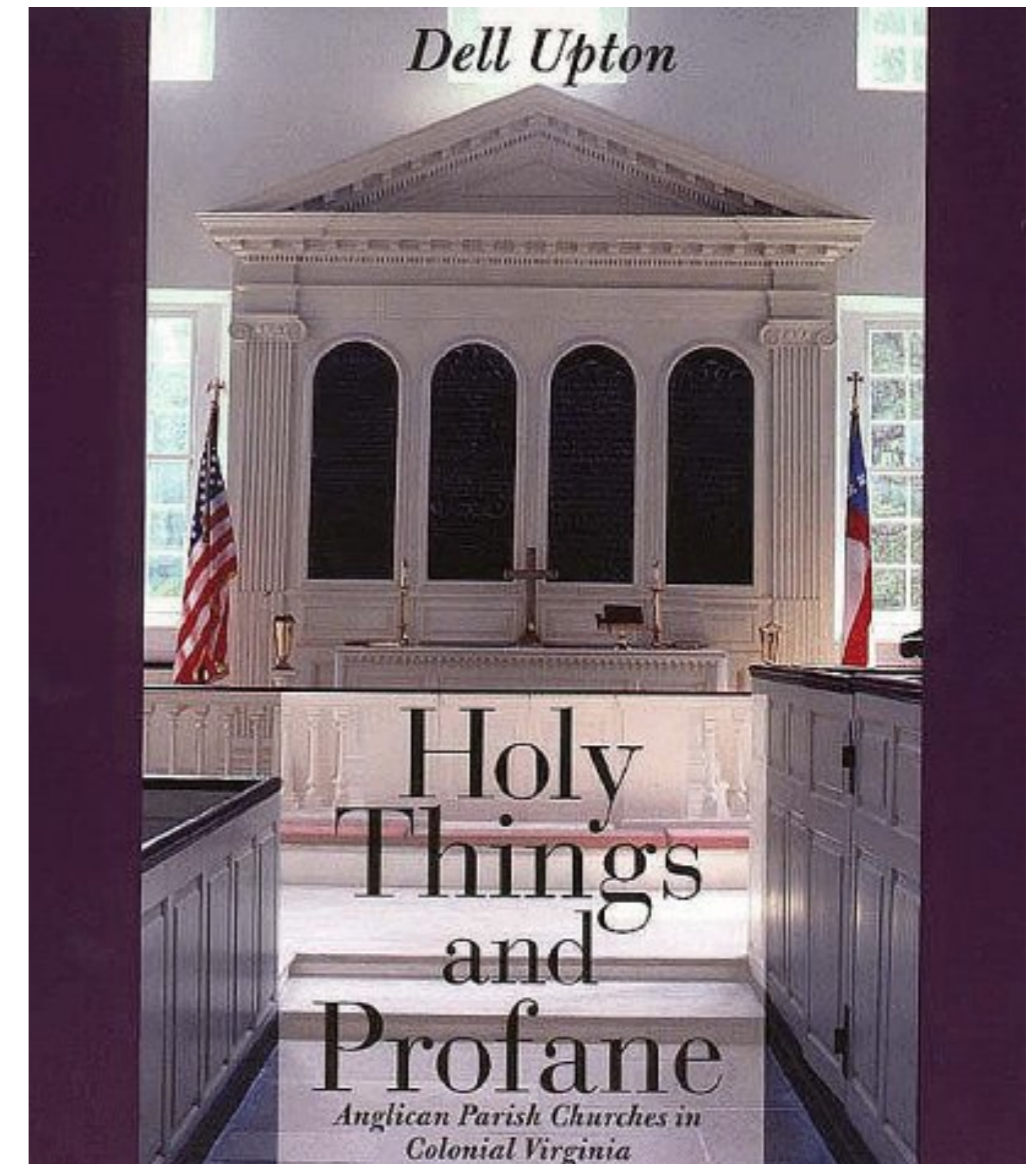
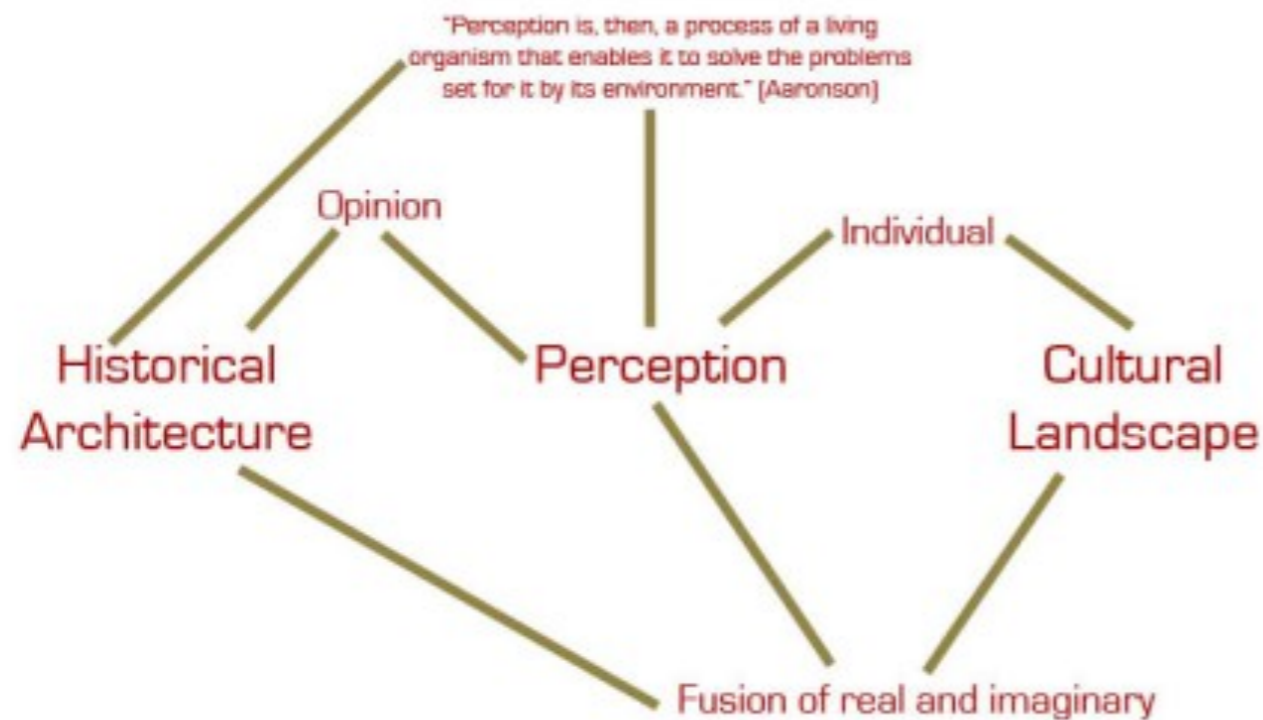
UCLA.

Architectural Historian turned
Cultural Historian

Upton argues that architecture
cannot be isolated from a
larger concept, which
developed during the 1990s.



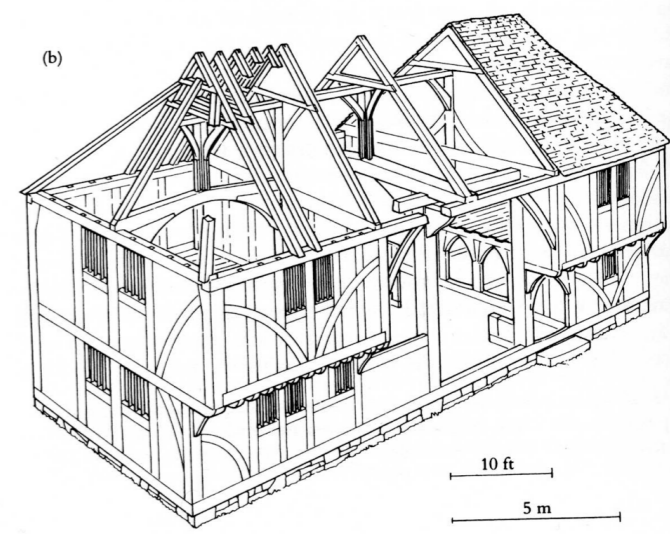
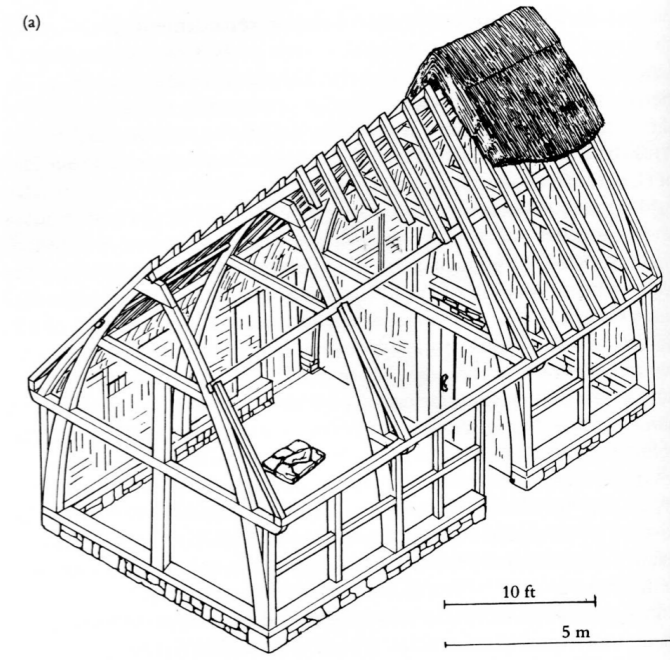
Eric Gillet 2009





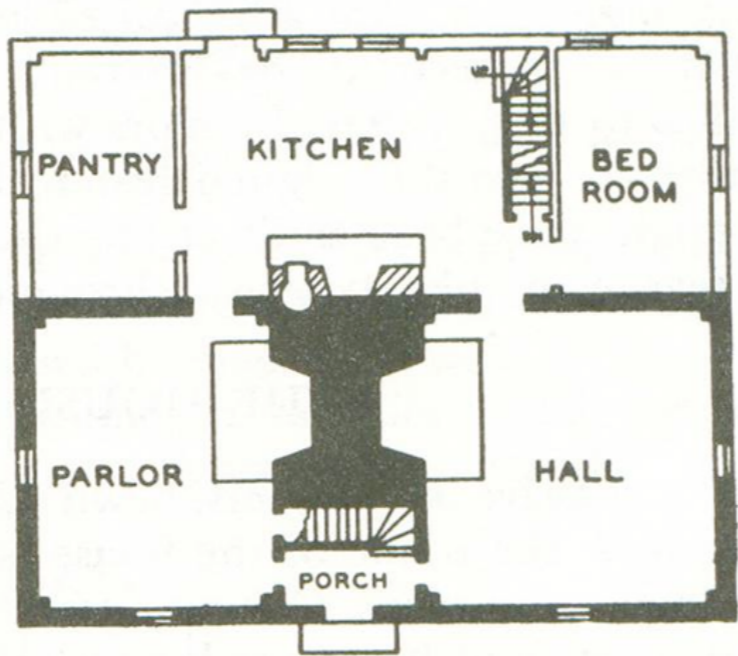
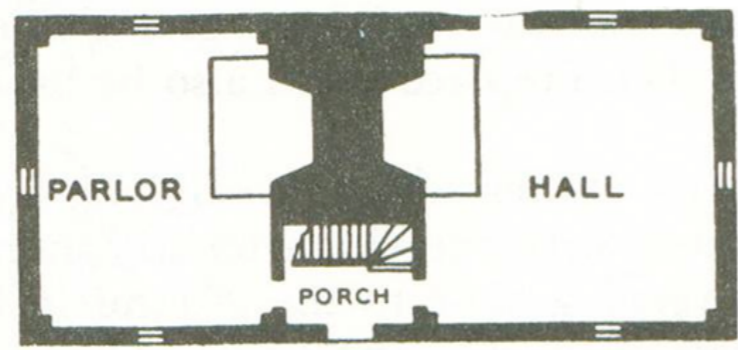
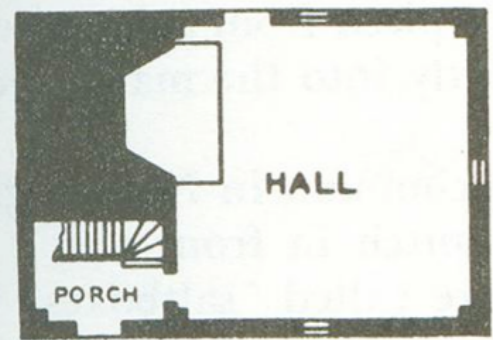


(a)



(b)

Traditional house forms, Medieval England, East Anglia region



Parson Capen House, 1682
Topside, Massachusetts

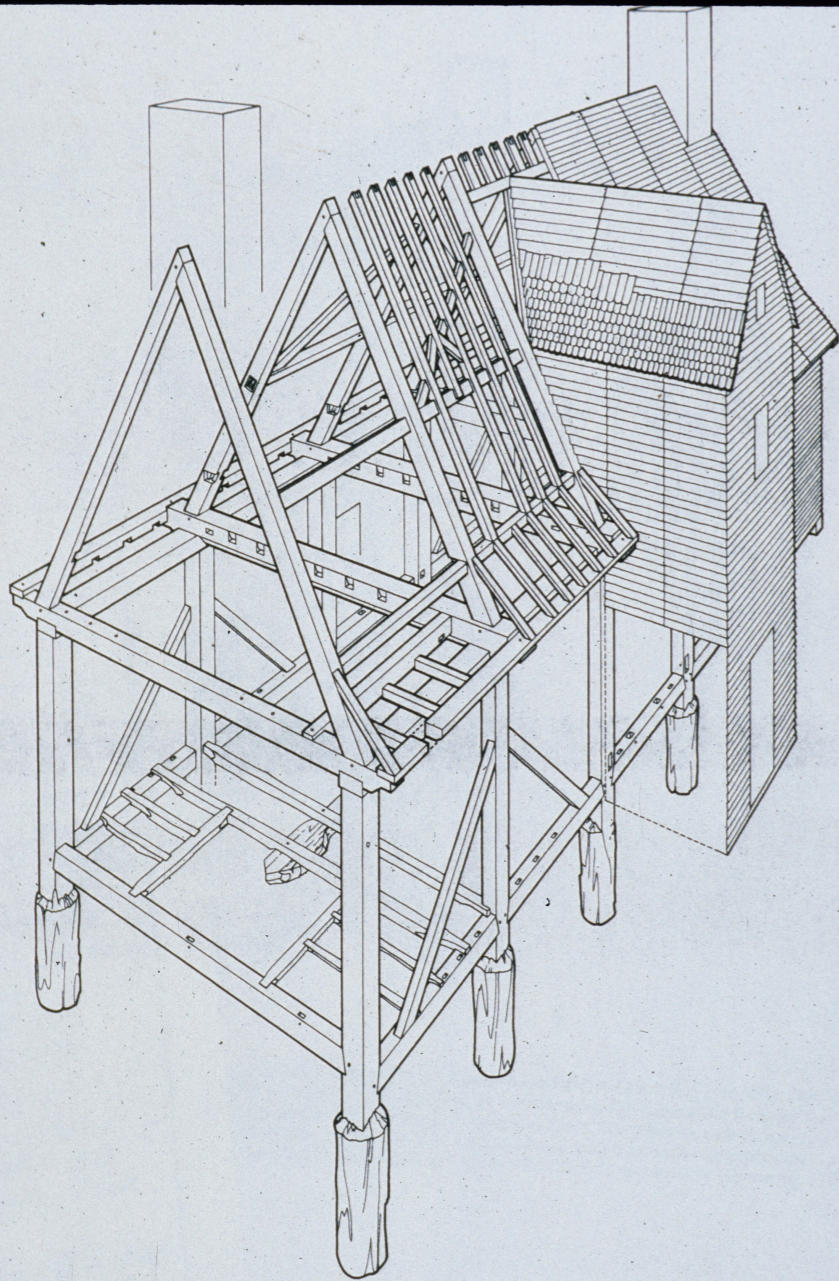


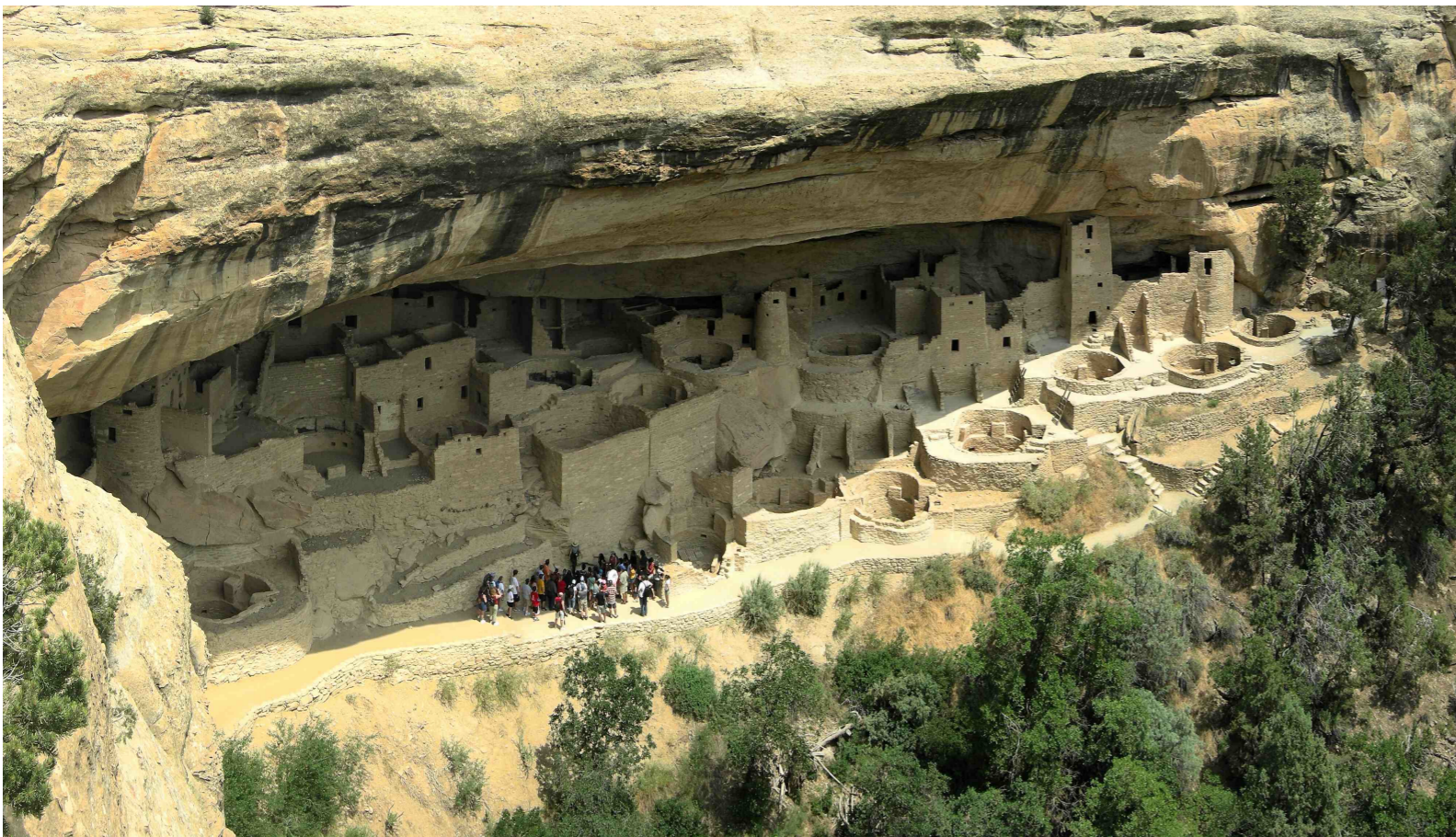
Fig. 4. Perspective view of the frame of Cedar Park, Anne Arundel County, Maryland, as built in 1702. (Drawing, Cary Carson and Chinh Hoang.)



Cedar Park, 1702
Ann Arundel County, Maryland



Cahokia, Illinois, Mississippian Culture
1200 AD



Early American Architecture